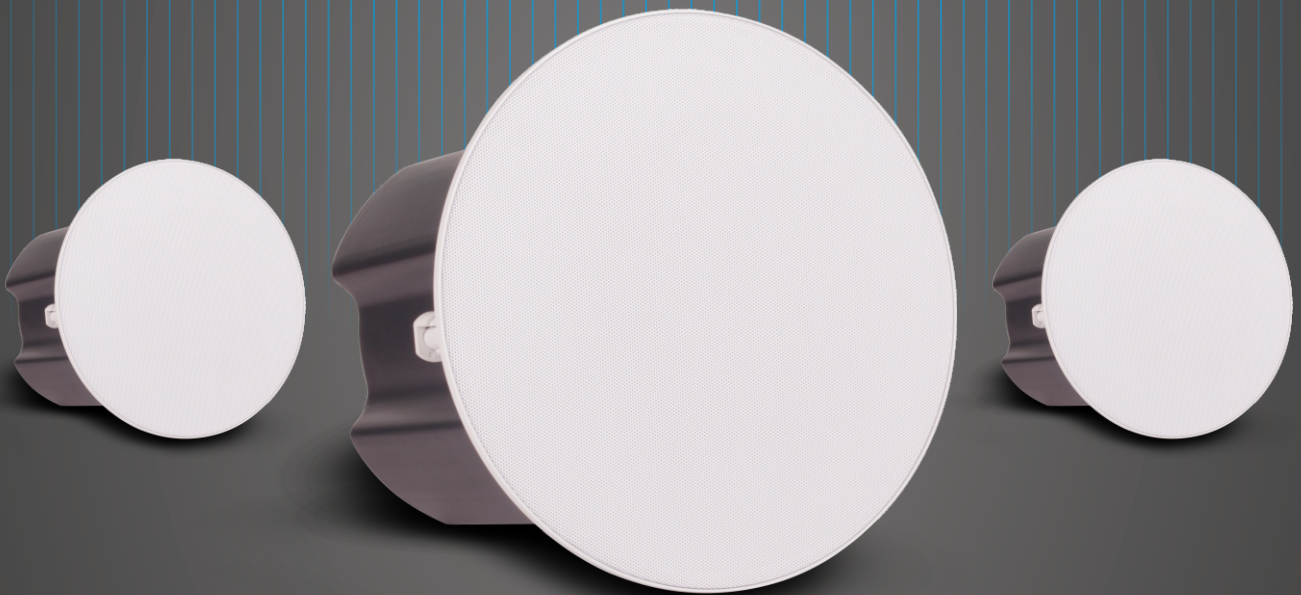




SC15



Network Ceiling Speaker

ZYCOO SC15 is a compact high-performance SIP enabled ceiling speaker which can be used for SIP paging, notification/tone broadcasting and streamed high definition music playback. The high efficient, full-range drive units will provide you with a uniquely advanced listening experience.

Applicable Scenarios



Schools



Health Care



Shopping Centers



Train/Bus
Stations



Government
Offices



Indoor
Carparks



Residential
Buildings



Retail Shops



Airports



Office
Buildings



Warehouses



Hotels

Features

- Dual-speaker driver design – low frequency bass driver unit and high-frequency tweeter driver unit. Provides premium sound quality, enhances the audience experience.
- ZYCOO IP Audio Center auto provisioning support, large-scale installations (local or remote) will be extremely easy and time-saving.
- Built-in SIP support, can be integrated with ZYCOO IP Audio Center or third-party SIP server, SIP paging using wideband G.722 codec which provides crystal clear HD voice.
- Music playback through ZYCOO IP Audio Center using streamed media. HD MP3 audio files supported for superior quality of background music.
- Standard PoE (IEEE 802.3at) support, simple and easy installation with a single network cable. External power supply can be used if required.
- Built-in amplifier with local or server controlled volume output level, SC15 guarantees full and consistent coverage and also the audio comfort and the flab.

Specifications

Speaker

Speaker component:	5.25" woofer unit + 1" tweeter unit
Sensitivity:	85dB/1m/1W
Max sound pressure level:	100dB
Amplifier:	Built-in Class D Amplifier
Rated power:	8Ω 15W
Frequency range:	70Hz – 20KHz
Coverage pattern:	90°H 90°V 30m ²
Acoustics:	Mono

Audio

Audio codecs:	G.722, G.711 A-law, G.711 U-law, Opus
Audio streaming:	MP3 sampling rate 8 – 48KHz, bit rate 64 – 320kbps, mono or Stereo

Network

Interface:	RJ45 10BASE-T/100BASE-TX PoE
Protocols:	SIP(RFC3261), HTTP, TCP/IP, SSL, DNS, SNTP, NTP, RTSP, RTP, RTCP, TCP, UDP, MQTT, ICMP, DHCP, ARP, SSH

Administration	
Configuration:	Web interface or auto provisioning server
Provisioning method:	MQTT IoT Protocol
Mechanical Properties	
Memory:	128MB RAM, 256MB Flash
Power input:	PoE IEEE802.3at or DC24V2A
Casing:	Surface-treated steel
Grille:	Surface-treated metal mesh plate
Color:	White
Weight:	3.45KG (7.6lb)
Dimension:	φ240 x 210 mm (7.2 x 6.3 in)
Mounting method:	high strength anti-corrosion clamps
Key:	Press and hold for 3 seconds to announce IP address; Press and hold for 10 seconds to reset device to factory defaults.
Environmental	
Installation environment:	Indoor
Operating temperature:	-20°C - 50°C (-4°F - 122°F)
Storage temperature:	-40°C - 70°C (-40°F - 158°F)
Humidity:	10% - 95% RH Non-condensing
Approvals	
Approvals:	EN 55032:2015, EN 55035:2017, EN 61000-3-2:2014, EN 61000-3-3:2013, EN 62368-1:2014+A11:2017, FCC Part 15B Class A



We Focus · We Deliver

16F, D5, Tianfu Software Park, Chengdu, China

+86 28 85337096

zycoo@zycoo.com